



HARLEQUIN® multiRIP™

Migration Utility for Windows

Version 7.1r1

April 2015

Contents

1	Overview	1
2	Versions of the RIP	4
3	Requirements.....	4
4	Limitations.....	5
5	Migrate procedure	7
	Appendix A—Example log file	12

Transferring settings to a new installation

Transferring settings from an installation that has been used for some time can be a difficult operation to perform quickly and accurately. The migration utility makes this process simpler.

This document describes the migration to the Harlequin MultiRIP v10.1r1 (HMR) using Migrate v7.1r1.

It is always recommended that you use the version of Migrate supplied with your new RIP. For example, when migrating from an older RIP to HMR v10.1r1 use Migrate v7.1r1.

I Overview

The migration utility is a self-contained, Java™-based utility that transfers the majority of settings from an installed and used Harlequin RIP™ or Harlequin MultiRIP™ to a freshly installed MultiRIP of a newer version. The Java component provides an easy to use interface that is consistent across all platforms.

In general terms, the transferred settings are those related to page setups and output plugins, while the un-transferred settings are those that may depend on the version of the RIP, such as custom page features. See [“Limitations” on page 6](#) for more details, including some limitations in this release.

The utility generally transfers page setups, including:

- RIP memory settings.
- Separations, screening, and color setups.
- Plugin parameters (as set in the Device Configuration dialog box).
- Use of page features (but not the page features themselves).
- Resolution and units.
- Effects (Rotate, Negative, Trim page, and Mirrorprint).
- Scaling.
- JobID—if the JobID in the old RIP is higher than the JobID in the new RIP, increase the JobID in the new RIP to match the old RIP.
- Cassette selection (and all cassettes whether or not used by a page setup).
- Calibration (calibration, tone curves, and intended/actual press).
- Passwords

A RIP password in a new RIP, that is a password in the **ConfigureRip** file in the `/Extras` dictionaries, will not be overwritten during a migration from an older RIP. This is because RIP passwords will be migrated from an earlier RIP, only when the equivalent password in the target (new) RIP is set to 0. This also applies to RIP passwords that were not present in the older RIP. So, if any RIP passwords are enabled in the new RIP before the migration, they will not be overwritten during the migration.

For non-RIP passwords, you should enable the option in the new RIP after the migration. That is, passwords in the `/ProtectedDevices`, `/PluginExtras` and `/ProtectedScreen` arrays in the **ConfigureRIP** file will not be migrated.

The migration utility also transfers:

- Harlequin plugins, and devices based on multiple-device plugins, if not present in the new RIP.
Note: Plugins are not migrated when migrating from a 32-bit to a 64-bit RIP.
- Some OEM plugins.
Note: If migrating a third-party plugin, ensure that the plugin is installed into the destination RIP before migration. To complete the migration process create a page setup for the plugin in the destination RIP. Some third-party plugins install DLLs which will not be migrated.
Note: Migrate copies over to the new RIP any folder under `/Devices` of the source RIP if it contains a plugin that is not already in the target RIP. It will not override any plugin that is already in the target folder (that is, it will skip the copy), but upgrades the settings to the newer version if necessary, and merges them into the plugin in the new RIP. Migrate will not delete any plugin from the new RIP.
- Passwords that have enabled plugins and other RIP extras.
- Simple imposition settings.

1.1 Migrate and HXM/HDS screening

Because of the recent changes made to HXM and HDS screening, the Migrate utility must be used when upgrading from v10.0 to v10.0r1 (or later).

Please note the following points before attempting to migrate:

- You must use the Migrate utility provided with v10.0r1 (or later). That is, the Migrate utility from v10.0r0 will not work correctly.
- The HXM/HDS screens must be installed into the v10.0r1(or later) RIP before an attempt is made to migrate.
- The imported (migrated) page setups will continue to use default screen angles for any spot colors explicitly listed; they may now be edited to assign screen angles to those spot colors if required.

New flexo and offset installers are provided with version 10.1r1 of the Harlequin MultiRIP.

It is recommended that you use the new installers for flexo and offset screens to install them into your new or upgraded RIP.

Note: The offset installer has been slightly modified. However, the offset screen data files that are installed are unchanged from v10.1r0.

From v10.1r1 the flexo screen names have been changed. The offset screen names are unchanged.

The new flexo screen naming convention is:

```
HXM Flexo <resolution (dpi)> <screen frequency (lpi)> <min dot size (µm)>
```

For example:

```
HXM Flexo 5080 175 60
```

Thus, in a previous version flexo screens would be named (for example): `HXM FINE FLX 2400 150` and `HXM MEDIUM FLX 2400 100`. From v10.1r1 the same screens will be called: `HXM Flexo 2400 150 11` and `HXM Flexo 2400 100 32`.

If you use these screens you must upgrade your RIP to v10.1r1 and then re-install the flexo and/or off-set screens using the new installers. Once you have installed both the RIP and the screens you can use Migrate to move all your page setups to the new RIP.

Generally, all setups will work correctly and the new screen names will be migrated and changed in the page setups of the v10.1r1 RIP. If there are any HXM Flexo screens migrated, a Warning dialog is displayed prompting you to install the HXM Flexo screens delivered with the new RIP.

This is, however, not true for most of the 5080 dpi flexo screens. The Fine 5080 screens will migrate to the 10 µm dot size, for example the HXM Fine FLX 5080 100 screen will migrate to HXM Flexo 5080 100 10. But all the other 5080 Flexo screens do not have a corresponding screen in 10.1r1. So if any 5080 dpi screens other than the Fine ones are used in page setups, they are not migrated, and for each screen in use a message of the following type is entered into the logfile:

```
HXM Flexo: The screen in Color Setup "My CMYK Separations" for Device "My Device"
needs to be updated to a newer screen
```

When the migration is completed, a warning dialog is displayed prompting you to manually update your screen selections in the RIP along with a reference to the logfile for more information.

1.2 CIP3 plugin

Version 1.5r0 of the CIP3 plugin was made available for use with HMR v10.0.0 (or later) because previous versions are not compatible with this RIP version (or later). Because of this incompatibility migrating CIP3 settings from earlier versions to HMR v10.xrx can cause problems. To successfully migrate CIP3 to HMR v10.xrx from an earlier RIP, such as v9.0rx, use one of the following procedures.

- Before using Migrate, ensure you create a CIP3 page setup in the target RIP using the newer v1.5r0 CIP3 plugin (or later). This ensures that, even after migration, the color setup styles for CIP3 called `CMYK Composite (Pixel)` and `CMYK Composite (Frame)` will be correct and will work.

However, after migration you will also see two color setup styles called `CMYK Composite (Pixel)_M00` and `CMYK Composite (Frame)_M00`. These have been migrated from the earlier RIP, and will be used by any page setups that were also migrated, but will not work in HMR 10.xrx.

Change the relevant “From” page setups to use the color setup styles without the `_M00` suffix, so that they work again. Once this is done for all the old page setups you can delete the broken `_M00` color setup styles using the Separations Manager.

- Before using Migrate, apply the following procedure to the “From” RIP. That is, the HSR v9.0rx RIP when migrating from v9.0rx to v10.0rx, or the v10.0r0 RIP when migrating from v10.0r0 to v10.0r1:

Carefully edit the file: `SW\Config\Devices\DevCSS\CIP3.X00` replacing each occurrence of `/Screened true` with `/Screened false`.

Proceed with the migration, and afterwards the CIP3 plugin should have normal, working color setup styles in both the “From” and “To” RIPs.

The same procedures can be used when migrating from v10.0r0 to v10.0r1 if your v10.0r0 RIP contains an older CIP3 plugin (earlier than v1.5r0) for whatever reason, or if it contains CIP3 setups that were migrated from an earlier RIP without following one of the above procedures.

1.3 Folder structure

The utility is supplied with an appropriate runtime version of Java for Windows. The runtime version is the Java Runtime Environment (JRE). The JRE has its own documentation, including a license concerning its use: this documentation is in the `jre` folder of the utility.

1.4 Document structure

The remainder of this document covers:

- Supported versions of the RIP—see “Versions of the RIP” on page 6.
- Requirements—see “Requirements” on page 6.
- Limitations—see “Limitations” on page 6.
- Migrate procedure—see “Migrate procedure” on page 8.
- Example log file—see “Appendix A—Example log file” on page 11.

2 Versions of the RIP

The migration utility can transfer settings between various versions of the RIP. The oldest version RIP supported by Migrate is version 4.1r4.

There is no support for migration to, or from, beta versions of the RIP, though it may be possible for some versions. There is also no support for migration to version 5.0r0 (and earlier beta versions), and this particular migration is known not to work.

This document describes migration to HMR v10.1rx from v8.1, v9.0rx, v2.0rx, v3.0rx.

3 Requirements

The old and new installations of the RIP and the migration utility must be accessible on the same computer.

The computer must be capable of running Java. In general, this imposes a lower requirement than running the RIP, but may require a later operating system than that required by version 4.5 or earlier of the RIP. The Java distributions do not give a full specification, but these are guidelines:

- All Windows platforms must have 32 MB of free RAM, 21 MB of free disk space, and otherwise be able to run the newer version of the RIP.

The utility creates a small number of temporary files, in the `sw` folder of the new RIP installation. These files are all in the temporary `newsw` folder and should not occupy more than 5 MB in total, unless large profiles have been imported into the original RIP. The utility copies some information from these temporary files into the configuration files of the new installation and removes the temporary files at the end of a migration, leaving only a log file of what was done.

You can run the utility by double-clicking `Migrate.exe` which is located (by default):

```
C:\Users\<<name>\<HMR_10_x_xxxxx>\migrate\SW_Migrate
```

4 Limitations

The aim of the utility is to transfer those settings for which a new setting can be deduced safely in the new RIP. We are working to reduce the number of limitations, but some are based on Java implementations and are outside our direct control.

4.1 Limitations in the utility

The migration utility does not transfer:

- 32-bit plugins to 64-bit RIPs (a warning dialog is displayed during the migration).
- Additional installed fonts. (The basic 32 fonts do transfer.)

- PDFR password.
- Memory settings return to default
- Page buffering returns to Multiple Parallel
- The Workspace and Page buffer folder locations, as configured in the RIP Extras dialog, are not transferred.
- Media Manager settings.
- Custom screens installed in the RIP.
- Settings between RIPs with different localizations.
- Emulation profiles

If you have imported emulation profiles into a pre TIFF/IT-P1 RIP and wish to migrate to a TIFF/IT-P1 or later RIP, you must re-import the profiles into the destination RIP. The Migrate utility issues a warning to this effect. Note however, that imported page setups continue to reference emulation profiles and will not need to be updated once the relevant emulation profiles have been imported.

The migration utility transfers some features partially:

- Configure RIP

Only the Print buffer and Network buffer settings from Configure RIP dialog of the old RIP are migrated to the new RIP.

- Input channels

A spool folder is only migrated if it is located within the old *sw* folder. If this is the case, it is migrated to the same location in the new *sw* folder.

If a channel name in the old version of the RIP matches a channel name that already exists in the new version of the RIP, the migrated channel name is postfixed by `_M00`.

- Page Features

If any page setups use special page features (ones not supplied with the new RIP by your supplier) you will need to copy these page features into the new RIP. Some page features may need rewriting to suit a newer version of the RIP but, for example, you may wish to do this anyway in order to use LanguageLevel 3 or other features of a newer version RIP.

- File-based output plugins

Page setups using the TIFF output plugin or other file-based output plugins that use folders named in their configuration dialog boxes, will still use the location defined in the old RIP. You may wish to change the locations if the old RIP defined a location in its own folder. You can probably leave the location unchanged if the old location was outside the old RIP's folder hierarchy.

- Page setups using the Fuji Pictography plugin

The utility cannot migrate page setups using the Fuji Pictography plugin from version 4.x to version 5.x where there is a corresponding plugin in the newer RIP installation. There is a warning if this situation occurs.

4.2 Version-based limitations

The migration utility transfers some features differently between various versions of the RIP.

Any version to version 8.1r0 (or later):

- Emulation BVD-FOGRA profiles which have been replaced in v8.1 will not be copied from older versions, unless a color setup is using them.

Version 8.2rx to version 8.3:

Migration from v8.2rx to v8.3 is not allowed when using Migrate v4.2r0.

Any version to version 9.0r0 (or later):

- The BVD_FOGRA press profiles have been replaced by new FOGRA and IFRA press profiles. If you use these files in a Press Calibration setup in the Calibration Edit dialog, you must edit the setup after migration, and select one of the replacement profiles available in the RIP.

4.3 Platform-based limitations

Most platform-based limitations are due to variations in the implementation of Java for the various platforms. We anticipate that these implementations will improve.

5 Migrate procedure

Note: Non-Harlequin plugins are treated in much the same way as Harlequin plugins. The only difference is that Migrate knows which version of Harlequin plugin it expects for a particular version of RIP, and patches the difference between the old and new.

Note: Migrate copies over to the new RIP any folder under `/Devices` of the source RIP if it contains a plugin that is not already in the target RIP. It will not override any plugin that is already in the target folder (that is, it will skip the copy), but upgrades the settings to the newer version if necessary, and merges them into the plugin in the new RIP. Migrate will not delete any plugin from the new RIP.

Make sure you have installed the new version of the RIP so that it is usable on the same computer as the old installation of the RIP.

If migrating an OEM plugin, please ensure that the plugin is installed into the destination RIP before migration. Then to complete the migration process create a page setup for the plugin in the destination RIP.

Note: Some third-party plugins install DLLs which will not be migrated.

Do not use the new RIP before performing the migration except, perhaps, to check that it operates and that the user interface appears in the correct language. If you do more, the migrated page setups may conflict with, and override, settings that you think you have made in the new RIP. If you have made tests and created page setups and other settings, we suggest that you delete that installation of the RIP and migrate into a fresh installation.

Note: When migrating from HMR 10.x with HLS to HMR 10.x with LDK if you don't re-install the RIP, you must change the `SW\secprefs` file to indicate that the RIP should use LDK instead of HLS after the migration. The `SW\secprefs` file is created during the installation, and it informs the RIP which security option to use when both LDK and HLS are installed on a system.

To use LDK security the `SW\secprefs` file contents should be:

```
method
ldk
```

A quick overview of the procedure is:

- Use the utility—see [“Using the migration tool” on page 9](#).
- Copy or re-create any items and settings not transferred by the utility—see [“Copy or re-create any items not transferred by the utility” on page 11](#).
- Check the RIP—see [“Check the new RIP” on page 11](#) and read [“Notes on transferred page setups” on page 11](#).

5.1 Using the migration tool

1. Before starting the migration procedure, quit all loaded versions of the Harlequin RIP.
Note: Before using the migration tool, you *must* have loaded each of the two RIP versions at least once. The migration tool will not find RIPs that have not previously been loaded. However, it is *not* necessary to have run any jobs through the RIP prior to using the migration utility.
2. Start the Migrate utility by running `Migrate.exe`. The Harlequin RIP Migration Utility dialog box opens, as shown in [Figure 1](#). The controls in the dialog allow you to select the old and new RIP versions that you want to transfer settings and password files between.
3. Choose the old RIP (the one you are transferring *from*). Click the button labelled **Select “From” RIP** and, using the dialog box that opens, navigate to the installation folder containing the RIP, then click **Open**. The program will scan the folder and its subfolders, searching for *all* instances of the Harlequin RIP. Any RIPs found are displayed in the **Version** menu.
4. Depending on the folder selected, or how you have installed the RIPs, there may be more than one RIP to choose from in the **Version** menu. From the menu, choose the appropriate RIP.

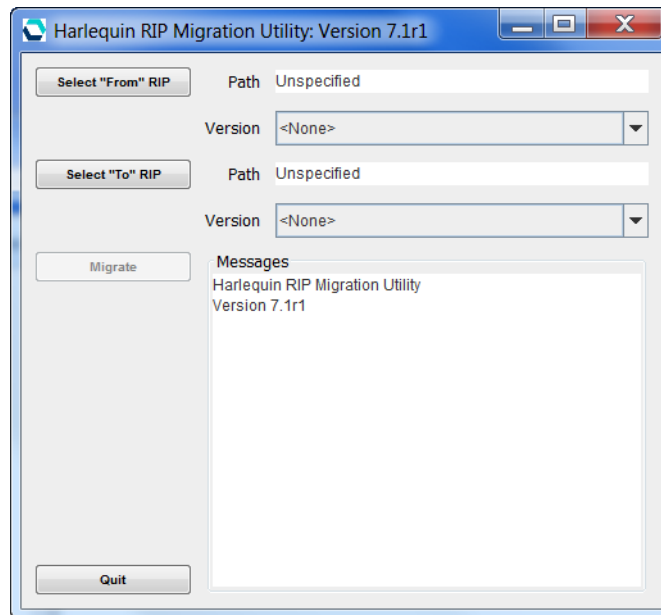


Figure 1 Harlequin RIP Migration Utility dialog box

5. Choose the new RIP (the one you are transferring *to*). Click the button labelled **Select “To” RIP** and, in the dialog box that opens, choose the folder containing the new RIP. Again, depending on the folder selected there may be more than one RIP in the **Version** menu.

Note: The “To” RIP cannot be the same as the “From” RIP, otherwise, Migrate will issue an error message and abort.

6. Click the **Migrate** button to start the migration process. The utility scans the old RIP and displays its progress in the **Messages** text panel. (While doing this, the utility is building a list of changes in files held in a temporary folder in the new RIP.)

A typical period is up to five seconds per simple page setup when scanning and under a second per file when merging the temporary files. During these processes there should be no long pauses (over 60 seconds) without text appearing in the **Messages** text panel.

If you are performing a migration from a 32 to 64-bit RIP the following message appears informing you that plugins will not be migrated:

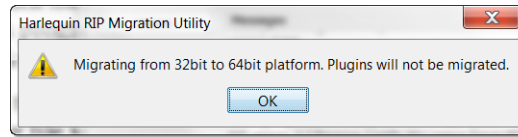


Figure 2 32-bit to 64-bit warning

7. Click OK to continue.

If the utility fails to find information about a plugin, it is unable to transfer any page setups using that plugin. The utility reports each problem of this kind with a dialog box displaying the message:

There is no information in the Tones Table for the plugin (*plugname*)

Click OK to dismiss the dialog box. If any page setups use this plugin you will see this message:

The page setup "*setup_name*" could not be migrated.
Do you wish to continue?

Click OK if you wish to continue with the migration, without the named page setup. Click Cancel if you wish to cancel the whole migration session.

If the utility reports this error for a plugin supported by your supplier, or you see any other problems, contact your supplier and give details.

8. If there are no problems, the utility displays a dialog box asking:

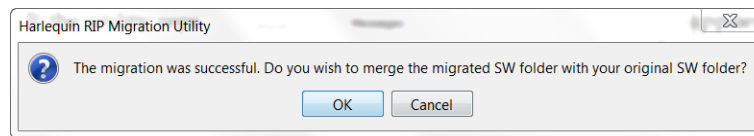


Figure 3 Merge SW folder prompt

Click OK to merge the temporary files and commit the changes. Again, the Messages text panel shows the progress of copying the files. Alternatively, click Cancel if you wish to leave your new RIP unchanged.

Note: Delete the `newSW` folder inside the `sw` folder if you click Cancel and quit the migration.

9. The utility displays a dialog prompting:

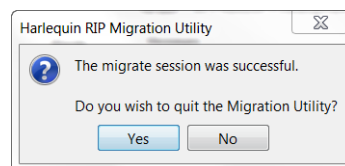


Figure 4 Migration successful prompt

If you answer Yes, the utility exits.

If you answer No, you can transfer settings to or from other RIPs in the same session. Change the "From" or "To" RIP using the appropriate button before clicking Migrate again.

5.2 Copy or re-create any items not transferred by the utility

Start the new RIP and if required, do the following.

- Make any other settings required in the Configure RIP dialog box, for example, memory settings and so on.
- Copy or install any custom screens.
- Install any custom fonts.
- If your old installation used any custom page features, copy them from the old RIP to the **SW/Page Features** folder of the new RIP.
- Create any color management setups needed.
- Enable the use of ColorPro in TIFF/IT-P1 or later RIPs.
- If migrating to TIFF/IT-P1 or later RIPs, you need to import any emulation profiles that were associated with color setups in the original RIP.
- Check the locations used by file-based output plugins.

5.3 Check the new RIP

First, check the listing of page setups in the Page Setup Manager dialog box. If the listing appears correct, edit each page setup that may use custom page features, color management, trapping, or a file-creating output device. If a page setup uses one of these options, check that you have supplied a suitable item of the correct name. [“Copy or re-create any items not transferred by the utility” on page 11](#) summarizes what you may need to do.

Next, print a simple job to each transferred page setup. Start by selecting **Disable output** in the Output Controller / Monitor before you print and Roam the page buffers. If the page buffers appear correct, enable output and send some page buffers to the output device. Look for errors in the Output Controller / Monitor and for messages in the RIP Monitor window.

If these tests show no errors the new RIP is ready for use.

5.4 Notes on transferred page setups

Successive versions of the RIP handle page setups and other collections of settings in different ways, especially in the way that they are named. The following notes may help you find settings that you think may not have been transferred.

- When you migrate from a Level 2 page setup to version 5.1 or later, the migrated page setup uses LanguageLevel 3 by default. If the Level 1 compatibility setting is chosen in a migrated page setup, this is transferred, but later use or editing of the page setup may detect an option setting, such as separating, where Level 2 is required. A dialog box announces where this happens.

Appendix A—Example log file

The migration utility produces a log of the migration procedure, stored as `migrate.log` in the folder containing the `sw` folder of the installation to which you are transferring settings. This text file is a record of all the messages in the **Messages** panel, together with any questions and responses asked in dialog boxes.

This is an example of transferring settings from Harlequin Server RIP v9.0r2 (32-bit) to Harlequin MultiRIP v10.0r0 (64-bit):

```
Harlequin RIP Migration Utility
Version 7.0r1
```

```
Migrating from Harlequin RIP version "9.0 Revision 2 HARLQON Licence Server MT RIP"
to version "40.0 Revision 0 Final 64-bit Edition"
```

```
Starting migration at: Wed May 29 12:42:40 BST 2013
RIP version "9.0 Revision 2 HARLQON Licence Server MT RIP" migrates as "9.0 Revision
0".
RIP version "40.0 Revision 0 Final 64-bit Edition" migrates as "40.0 Revision 0".
```

```
Building file mapping table ... completed.
```

```
Migrating plugins and devices ...
* Plugin "epson3800" already exists.
* Plugin "okipcl" already exists.
- Migrating color profiles for plugin "okipcl" ...
** "Bvd-fogr" already exists.
* Plugin "pdfraster" already exists.
* Plugin "testnone" already exists.
* Plugin "tiff" already exists.
- Migrating color profiles for device "Preview" ...
** "Bvd-fogr" already exists.
- Migrating Device Manager ...
-- All devices of plugin "okipcl.i32" migrated.
-- All devices of plugin "tiff.i32" migrated.
Plugins and devices migration completed.
```

```
Migrating separations ...
- Migrating separations for device "Preview" ...
- Migrating separations for device "TIFF.X00" ...
Separations migration completed.
```

```
Migrating inksets ...
Inksets migration completed
```

```
Migrating trapsets ...
- All trapsets in
"C:\Users\kevinb\HarlequinRIP_9_0_2_Generic\SW\Config\Trapping\TrapPro" migrated.
Trapsets migration completed.
```

```
Migrating Imposition Manager ...
Imposition Manager migration completed.
```

Migrating color rendering intents ...
Color rendering intents migration completed.

Migrating color setups ...
- Migrating color setups for device "Preview" in space "DeviceCMYK" ...
-- "(No Color Management)" migrated.
- Migrating color setups for device "Preview" in space "DeviceGray" ...
-- "(No Color Management)" migrated.
- Migrating color setups for device "Preview" in space "DeviceRGB" ...
-- "(No Color Management)" migrated.
- Migrating color setups for device "Preview" in space "DeviceCMYK" ...
- Migrating color setups for device "Preview" in space "DeviceGray" ...
- Migrating color setups for device "Preview" in space "DeviceRGB" ...
- Migrating color setups for device "TIFF" in space "DeviceCMYK" ...
-- "(No Color Management)" migrated.
Color setups migration completed.

Migrating color space resources ...
Color space resources migration completed.

Migrating page setups ...
- "Default Page Setup" migrated.
- "Packaging1" migrated.
- "Preview1" migrated.
Page setups migration completed.

Migrating RIP configurations (memory settings and passwords) ... completed.

Migrating JobID ... completed.

Migrating calibration sets ... completed.

Migrating cassette manager ...
Cassette manager migration completed.

Migrating units database ... completed.

Migrating UI Preference ... completed.

Migrating screen list ... completed.

Migrating Press color profiles ...
* "Commercial A" already exists.
* "Fogra 39L" already exists.
* "Fogra 43L" already exists.
* "GRACol (CGATS TR006)" already exists.
* "IFRA 26L" already exists.
* "IFRA 30L" already exists.
* "Linear" already exists.
* "SNAP (CGATS TR002)" already exists.
* "SWOP (CGATS TR001)" already exists.
* "SWOP (CGATS TR003)" already exists.
* "SWOP (CGATS TR005)" already exists.
* "Linear" already exists.
Press color profiles migration completed

Migrating Emulation color profiles ...
* "3M Matchprint" already exists.
* "3M Matchprint (Standard)" already exists.
* "Commercial A" already exists.
* "DuPont Cromalin" already exists.
* "DuPont Waterproof Commercial" already exists.

```
* "DuPont Waterproof Publication" already exists.
* "Fogra 39L" already exists.
* "Fogra 43L" already exists.
* "Fuji ColorArt Comm CR-T3 Gloss" already exists.
* "Fuji ColorArt Pub CR-T3 MMatte" already exists.
* "GRACol (CGATS TR006)" already exists.
* "IFRA 26L" already exists.
* "IFRA 30L" already exists.
* "SNAP (CGATS TR002)" already exists.
* "SWOP (CGATS TR001)" already exists.
* "SWOP (CGATS TR003)" already exists.
* "SWOP (CGATS TR005)" already exists.
Emulation color profiles migration completed

Migrating ICC profiles ...
* "ECI_USWebCoatedSWOP.icc" already exists.
* "sRGB.icc" already exists.
* "sRGB_IEC61966-2-1_withBPC.icc" already exists.

ICC profiles migration completed.

Migrating ICC color rendering dictionaries ...
ICC color rendering dictionaries migration completed.

Migrating input channels ...
- Input channel "SpoolFolder" migrated as "SpoolFolder_M00".
Input channels migration completed.

Migration completed at: Fri May 10 12:17:34 BST 2013
```

Notes about the log file

1. The log starts at the point that you click **Migrate**, so it does not show the exact messages that may appear as you select RIPs and the utility identifies the RIP version. This text is typical of the message shown when migrating from v9.0r2 to v10.0r0:

```
Migrating from Harlequin RIP version "9.0 Revision 2 HARLQON Licence Server MT RIP" to
version "40.0 Revision 0 Final 64-bit Edition"
```

Note: HMR v10.r0 uses a core RIP of v40.0, hence version "40.0 Revision 0 Final 64-bit Edition".

2. When migrating from a 32 to 64-bit RIP plugins are not migrated.
3. If the utility is unable to determine the exact revision of a RIP installation, the utility will report the difficulty and then continue without error.
4. If you perform more than one migration to the same destination RIP, the log for the second and subsequent migration session is added to the end of the log for the earlier migration.
5. The messages consistently use the term *migrating* for stages that build the temporary `newSW` folder, and *merging* for the stage where the utility modifies the RIP to which you are migrating.



Copyright and Trademarks

Version: Harlequin MultiRIP Migrate v7.1r1

April 2015

Part number: HMR-Migrate-OEM-Win

Document issue: 122

Copyright © 2015 Global Graphics Software Ltd and its licensors. All Rights Reserved.

Global Graphics Software Ltd. Confidential Information.

Certificate of Computer Registration of Computer Software.

Registration No. 2006SR05517

No part of this publication may be reproduced, stored in a retrieval system, or transmitted, in any form or by any means, electronic, mechanical, photocopying, recording, or otherwise, without the prior written permission of Global Graphics Software Ltd.

The information in this publication is provided for information only and is subject to change without notice. This publication could contain technical inaccuracies, typographical errors and out-of-date information. Use of the information is therefore at your own risk. Global Graphics Software Ltd and its affiliates shall not be responsible or liable for any loss or damage that may arise from the use of any information in this publication.

The software described in this publication is furnished under license and may only be used or copied in accordance with the terms of that license. Global Graphics Software Ltd accepts no responsibility or liability for any special, punitive, incidental, indirect or consequential damages of any kind, or any damages whatsoever, including, without limitation, those resulting from loss of use, data or profits, whether or not Global Graphics Software has been advised of the possibility of such damages, and on any theory of liability, arising out of or in connection with the use of this software.

Protected by U.S Patents 5,862,253; 6,343,145; 6,330,072; 6,483,524; 6,380,951; 6,755,498; 6,624,908; 6,809,839; 6,755,498; 6,624,908; 6,809,839; 6,996,284; 7,298,526; 7,359,530; 8,749,813; 8,823,982.

Other U.S. Patents Pending

Protected by European Patents 0 803 160; 0 772 934

Portions Type 1 font renderer contains licensed third party software

Portions copyright 1991 International Business Machines, Corp.,

Portions copyright 1991 Lexmark International, Inc.

Portions Adobe Glyph List. Copyright 1990-2007 Adobe Systems Incorporated.

Portions Adobe Cmaps. Copyright 1990-2009 Adobe Systems Incorporated

Portions TrueType® font renderer copyright 1997 Bitstream, Inc.

Portions developed using the Kakadu software. Copyright 2001 David Taubman, The University of New South Wales (Unisearch Ltd)

The ECI and FOGRA ICC color profiles supplied with this Harlequin RIP are distributed with the kind permission of the ECI (European Color Initiative) and FOGRA respectively, and of Heidelberger Druckmaschinen AG (HEIDELBERG).

The IFRA ICC profiles supplied with this Harlequin RIP are distributed with the kind permission of IFRA and of GretagMacbeth.

Harlequin and the Harlequin RIP are trademarks of Global Graphics Software Ltd, which may be registered in certain jurisdictions. Harlequin ColorPro, Harlequin Dispersed Screening (HDS), Harlequin Precision Screening (HPS), TrapPro, SetGold, SetGoldPro, Harlequin MultiRIP, Harlequin Host Renderer, Harlequin Parallel Pages and Harlequin VariData are all trademarks of Global Graphics Software Ltd. Other brand or product names are the registered trademarks or trademarks of their respective holders.

TrueType is a registered trademark of Apple Computer, Inc.

Microsoft, Win32, Windows, Windows NT, Windows Server, Windows Vista, Windows 7, Windows 8 and WinFX are either registered trademarks or trademarks of the Microsoft Corporation in the United States and/or other countries.

PANTONE® Colors displayed herein may not match PANTONE-identified standards. Consult current PANTONE Color Publications for accurate color. PANTONE® and other Pantone trademarks are the property of Pantone LLC. © Pantone LLC, 2014.

Font data copyright 1991 -1995 Linotype Hell Corp.

Fonts copyright (c) 2000-2004 Timo Lehtinen. All Rights Reserved. <http://www.timolehtinen.com/type/>.

International Cooperation for Integration of Processes in Prepress, Press and Postpress, CIP4, Job Definition Format, JDF and the CIP4 logo are trademarks of CIP4.

Adobe, Adobe Photoshop, Adobe Type Manager, Acrobat, Display PostScript, Adobe Illustrator, PostScript, Distiller and PostScript 3 are either registered trademarks or trademarks of Adobe Systems Incorporated in the United States and/or other countries which may be registered in certain jurisdictions.

Portions include software licensed under the following terms:

OpenSSL - general purpose cryptography library

Copyright © 1998-2011 The OpenSSL Project. All rights reserved.

Redistribution and use in source and binary forms, with or without modification, are permitted provided that the following conditions are met:

1. Redistributions of source code must retain the above copyright notice, this list of conditions and the following disclaimer.
2. Redistributions in binary form must reproduce the above copyright notice, this list of conditions and the following disclaimer in the documentation and/or other materials provided with the distribution.
3. All advertising materials mentioning features or use of this software must display the following acknowledgment: "This product includes software developed by the OpenSSL Project for use in the OpenSSL Toolkit. (<http://www.openssl.org/>)"
4. The names "OpenSSL Toolkit" and "OpenSSL Project" must not be used to endorse or promote products derived from this software without prior written permission. For written permission, please contact openssl-core@openssl.org.
5. Products derived from this software may not be called "OpenSSL" nor may "OpenSSL" appear in their names without prior written permission of the OpenSSL Project.
6. Redistributions of any form whatsoever must retain the following acknowledgment: "This product includes software developed by the OpenSSL Project for use in the OpenSSL Toolkit (<http://www.openssl.org/>)"

THIS SOFTWARE IS PROVIDED BY THE OpenSSL PROJECT "AS IS" AND ANY EXPRESSED OR IMPLIED WARRANTIES, INCLUDING, BUT NOT LIMITED TO, THE IMPLIED WARRANTIES OF MERCHANTABILITY AND FITNESS FOR A PARTICULAR PURPOSE ARE DISCLAIMED. IN NO EVENT SHALL THE OpenSSL PROJECT OR ITS CONTRIBUTORS BE LIABLE FOR ANY DIRECT, INDIRECT, INCIDENTAL, SPECIAL, EXEMPLARY, OR CONSEQUENTIAL DAMAGES (INCLUDING, BUT NOT LIMITED TO, PROCUREMENT OF SUBSTITUTE GOODS OR SERVICES; LOSS OF USE, DATA, OR PROFITS; OR BUSINESS INTERRUPTION) HOWEVER CAUSED AND ON ANY THEORY OF LIABILITY, WHETHER IN CONTRACT, STRICT LIABILITY, OR TORT (INCLUDING NEGLIGENCE OR OTHERWISE) ARISING IN ANY WAY OUT OF THE USE OF THIS SOFTWARE, EVEN IF ADVISED OF THE POSSIBILITY OF SUCH DAMAGE.

This product includes cryptographic software written by Eric Young (ey@cryptsoft.com). This product includes software written by Tim Hudson (tjh@cryptsoft.com).

Copyright © 1995-1998 Eric Young (ey@cryptsoft.com)

All rights reserved.

This package is an SSL implementation written by Eric Young (eay@cryptsoft.com). The implementation was written so as to conform with Netscapes SSL.

This library is free for commercial and non-commercial use as long as the following conditions are adhered to. The following conditions apply to all code found in this distribution, be it the RC4, RSA, lhash, DES, etc., code; not just the SSL code. The SSL documentation included with this distribution is covered by the same copyright terms except that the holder is Tim Hudson (tjh@cryptsoft.com).

Copyright remains Eric Young's, and as such any Copyright notices in the code are not to be removed. If this package is used in a product, Eric Young should be given attribution as the author of the parts of the library used. This can be in the form of a textual message at program startup or in documentation (online or textual) provided with the package.

Redistribution and use in source and binary forms, with or without modification, are permitted provided that the following conditions are met:

1. Redistributions of source code must retain the copyright notice, this list of conditions and the following disclaimer.
2. Redistributions in binary form must reproduce the above copyright notice, this list of conditions and the following disclaimer in the documentation and/or other materials provided with the distribution.
3. All advertising materials mentioning features or use of this software must display the following acknowledgement: "This product includes cryptographic software written by Eric Young (eay@cryptsoft.com)" The word 'cryptographic' can be left out if the routines from the library being used are not cryptographic related:-).
4. If you include any Windows specific code (or a derivative thereof) from the apps directory (application code) you must include an acknowledgement: "This product includes software written by Tim Hudson (tjh@cryptsoft.com)"

THIS SOFTWARE IS PROVIDED BY ERIC YOUNG "AS IS" AND ANY EXPRESS OR IMPLIED WARRANTIES, INCLUDING, BUT NOT LIMITED TO, THE IMPLIED WARRANTIES OF MERCHANTABILITY AND FITNESS FOR A PARTICULAR PURPOSE ARE DISCLAIMED. IN NO EVENT SHALL THE AUTHOR OR CONTRIBUTORS BE LIABLE FOR ANY DIRECT, INDIRECT, INCIDENTAL, SPECIAL, EXEMPLARY, OR CONSEQUENTIAL DAMAGES (INCLUDING, BUT NOT LIMITED TO, PROCUREMENT OF SUBSTITUTE GOODS OR SERVICES; LOSS OF USE, DATA, OR PROFITS; OR BUSINESS INTERRUPTION) HOWEVER CAUSED AND ON ANY THEORY OF LIABILITY, WHETHER IN CONTRACT, STRICT LIABILITY, OR TORT (INCLUDING NEGLIGENCE OR OTHERWISE) ARISING IN ANY WAY OUT OF THE USE OF THIS SOFTWARE, EVEN IF ADVISED OF THE POSSIBILITY OF SUCH DAMAGE.

The licence and distribution terms for any publicly available version or derivative of this code cannot be changed. i.e. this code cannot simply be copied and put under another distribution licence [including the GNU Public Licence.

ICU - IBM library providing Unicode and Globalization support

Copyright © 1995-2003 International Business Machines Corporation and others All rights reserved.

Permission is hereby granted, free of charge, to any person obtaining a copy of this software and associated documentation files (the "Software"), to deal in the Software without restriction, including without limitation the rights to use, copy, modify, merge, publish, distribute, and/or sell copies of the Software, and to permit persons to whom the Software is furnished to do so, provided that the above copyright notice(s) and this permission notice appear in all copies of the Software and that both the above copyright notice(s) and this permission notice appear in supporting documentation.

THE SOFTWARE IS PROVIDED "AS IS", WITHOUT WARRANTY OF ANY KIND, EXPRESS OR IMPLIED, INCLUDING BUT NOT LIMITED TO THE WARRANTIES OF MERCHANTABILITY, FITNESS FOR A PARTICULAR PURPOSE AND NONINFRINGEMENT OF THIRD PARTY RIGHTS. IN NO EVENT SHALL THE COPYRIGHT HOLDER OR HOLDERS INCLUDED IN THIS NOTICE BE LIABLE FOR ANY CLAIM, OR ANY SPECIAL INDIRECT OR CONSEQUENTIAL DAMAGES, OR ANY DAMAGES WHATSOEVER RESULTING FROM LOSS OF USE, DATA OR PROFITS, WHETHER IN AN ACTION OF CONTRACT, NEGLIGENCE OR OTHER TORTIOUS ACTION, ARISING OUT OF OR IN CONNECTION WITH THE USE OR PERFORMANCE OF THIS SOFTWARE.

Except as contained in this notice, the name of a copyright holder shall not be used in advertising or otherwise to promote the sale, use or other dealings in this Software without prior written authorization of the copyright holder.

Expat - XML parser library

Copyright © 1998, 1999, 2000 Thai Open Source Software Center Ltd and Clark Cooper

Copyright © 2001, 2002 Expat maintainers.

Permission is hereby granted, free of charge, to any person obtaining a copy of this software and associated documentation files (the "Software"), to deal in the Software without restriction, including without limitation the rights to use, copy, modify, merge, publish, distribute, sublicense, and/or sell copies of the Software, and to permit persons to whom the Software is furnished to do so, subject to the following conditions:

The above copyright notice and this permission notice shall be included in all copies or substantial portions of the Software.

THE SOFTWARE IS PROVIDED "AS IS", WITHOUT WARRANTY OF ANY KIND,

EXPRESS OR IMPLIED, INCLUDING BUT NOT LIMITED TO THE WARRANTIES OF MERCHANTABILITY, FITNESS FOR A PARTICULAR PURPOSE AND NONINFRINGEMENT. IN NO EVENT SHALL THE AUTHORS OR COPYRIGHT HOLDERS BE LIABLE FOR ANY CLAIM, DAMAGES OR OTHER LIABILITY, WHETHER IN AN ACTION OF CONTRACT, TORT OR OTHERWISE, ARISING FROM, OUT OF OR IN CONNECTION WITH THE SOFTWARE OR THE USE OR OTHER DEALINGS IN THE SOFTWARE.

pthread-win32 - a POSIX threads library for Microsoft Windows

This file is Copyrighted

zlib - general purpose compression library

Copyright © 1995-2013 Jean-loup Gailly and Mark Adler

This software is provided 'as-is', without any express or implied warranty. In no event will the authors be held liable for any damages arising from the use of this software.

Permission is granted to anyone to use this software for any purpose, including commercial applications, and to alter it and redistribute it freely, subject to the following restrictions:

1. The origin of this software must not be misrepresented; you must not claim that you wrote the original software. If you use this software in a product, an acknowledgment in the product documentation would be appreciated but is not required.
2. Altered source versions must be plainly marked as such, and must not be misrepresented as being the original software.
3. This notice may not be removed or altered from any source distribution.

Copyright © 2005-2008, The Android Open Source Project

Licensed under the Apache License, Version 2.0 (the "License"); you may not use this file except in compliance with the License.

Unless required by applicable law or agreed to in writing, software distributed under the License is distributed on an "AS IS" BASIS, WITHOUT WARRANTIES OR CONDITIONS OF ANY KIND, either express or implied. See the License for the specific language governing permissions and limitations under the License.

Apache License

Version 2.0, January 2004

<http://www.apache.org/licenses/>

TERMS AND CONDITIONS FOR USE, REPRODUCTION, AND DISTRIBUTION

1. Definitions.

"License" shall mean the terms and conditions for use, reproduction, and distribution as defined by Sections 1 through 9 of this document.

"Licensor" shall mean the copyright owner or entity authorized by the copyright owner that is granting the License.

"Legal Entity" shall mean the union of the acting entity and all other entities that control, are controlled by, or are under common control with that entity. For the purposes of this definition, "control" means (i) the power, direct or indirect, to cause the direction or management of such entity, whether by contract or otherwise, or (ii) ownership of fifty percent (50%) or more of the outstanding shares, or (iii) beneficial ownership of such entity.

"You" (or "Your") shall mean an individual or Legal Entity exercising permissions granted by this License.

“Source” form shall mean the preferred form for making modifications, including but not limited to software source code, documentation source, and configuration files.

“Object” form shall mean any form resulting from mechanical transformation or translation of a Source form, including but not limited to compiled object code, generated documentation, and conversions to other media types.

“Work” shall mean the work of authorship, whether in Source or Object form, made available under the License, as indicated by a copyright notice that is included in or attached to the work (an example is provided in the Appendix below).

“Derivative Works” shall mean any work, whether in Source or Object form, that is based on (or derived from) the Work and for which the editorial revisions, annotations, elaborations, or other modifications represent, as a whole, an original work of authorship. For the purposes of this License, Derivative Works shall not include works that remain separable from, or merely link (or bind by name) to the interfaces of, the Work and Derivative Works thereof.

“Contribution” shall mean any work of authorship, including the original version of the Work and any modifications or additions to that Work or Derivative Works thereof, that is intentionally submitted to Licensor for inclusion in the Work by the copyright owner or by an individual or Legal Entity authorized to submit on behalf of the copyright owner. For the purposes of this definition, “submitted” means any form of electronic, verbal, or written communication sent to the Licensor or its representatives, including but not limited to communication on electronic mailing lists, source code control systems, and issue tracking systems that are managed by, or on behalf of, the Licensor for the purpose of discussing and improving the Work, but excluding communication that is conspicuously marked or otherwise designated in writing by the copyright owner as “Not a Contribution.”

“Contributor” shall mean Licensor and any individual or Legal Entity on behalf of whom a Contribution has been received by Licensor and subsequently incorporated within the Work.

2. Grant of Copyright License. Subject to the terms and conditions of this License, each Contributor hereby grants to You a perpetual, worldwide, non-exclusive, no-charge, royalty-free, irrevocable copyright license to reproduce, prepare Derivative Works of, publicly display, publicly perform, sublicense, and distribute the Work and such Derivative Works in Source or Object form.

3. Grant of Patent License. Subject to the terms and conditions of this License, each Contributor hereby grants to You a perpetual, worldwide, non-exclusive, no-charge, royalty-free, irrevocable (except as stated in this section) patent license to make, have made, use, offer to sell, sell, import, and otherwise transfer the Work, where such license applies only to those patent claims licensable by such Contributor that are necessarily infringed by their Contribution(s) alone or by combination of their Contribution(s) with the Work to which such Contribution(s) was submitted. If You institute patent litigation against any entity (including a cross-claim or counterclaim in a lawsuit) alleging that the Work or a Contribution incorporated within the Work constitutes direct or contributory patent infringement, then any patent licenses granted to You under this License for that Work shall terminate as of the date such litigation is filed.

4. Redistribution. You may reproduce and distribute copies of the Work or Derivative Works thereof in any medium, with or without modifications, and in Source or Object form, provided that You meet the following conditions:

- (a) You must give any other recipients of the Work or Derivative Works a copy of this License; and
- (b) You must cause any modified files to carry prominent notices stating that You changed the files; and
- (c) You must retain, in the Source form of any Derivative Works that You distribute, all copyright, patent, trademark, and attribution notices from the Source form of the Work, excluding those notices that do not pertain to any part of the Derivative Works; and
- (d) If the Work includes a “NOTICE” text file as part of its distribution, then any Derivative Works that You distribute must include a readable copy of the attribution notices contained within such NOTICE file, excluding those notices that do not pertain to any part of the Derivative Works, in at least one of the following places: within a NOTICE text file distributed as part of the Derivative Works; within the Source form or documentation, if provided along with the Derivative Works; or, within a display generated by the Derivative Works, if and wherever such third-party notices normally appear. The contents of the NOTICE file are for informational purposes only and do not modify the License. You may add Your own attribution notices within Derivative Works that You distribute, alongside or as an addendum to the NOTICE text from the Work, provided that such additional attribution notices cannot be construed as modifying the License.

You may add Your own copyright statement to Your modifications and may provide additional or different license terms and conditions for use, reproduction, or distribution of Your modifications, or for any such Derivative Works as a whole, provided Your use, reproduction, and distribution of the Work otherwise complies with the conditions stated in this License.

5. Submission of Contributions. Unless You explicitly state otherwise, any Contribution intentionally submitted for inclusion in the Work by You to the Licensor shall be under the terms and conditions of this License, without

any additional terms or conditions. Notwithstanding the above, nothing herein shall supersede or modify the terms of any separate license agreement you may have executed with Licensor regarding such Contributions.

6. Trademarks. This License does not grant permission to use the trade names, trademarks, service marks, or product names of the Licensor, except as required for reasonable and customary use in describing the origin of the Work and reproducing the content of the NOTICE file.

7. Disclaimer of Warranty. Unless required by applicable law or agreed to in writing, Licensor provides the Work (and each Contributor provides its Contributions) on an “AS IS” BASIS, WITHOUT WARRANTIES OR CONDITIONS OF ANY KIND, either express or implied, including, without limitation, any warranties or conditions of TITLE, NON-INFRINGEMENT, MERCHANTABILITY, or FITNESS FOR A PARTICULAR PURPOSE. You are solely responsible for determining the appropriateness of using or redistributing the Work and assume any risks associated with Your exercise of permissions under this License.

8. Limitation of Liability. In no event and under no legal theory, whether in tort (including negligence), contract, or otherwise, unless required by applicable law (such as deliberate and grossly negligent acts) or agreed to in writing, shall any Contributor be liable to You for damages, including any direct, indirect, special, incidental, or consequential damages of any character arising as a result of this License or out of the use or inability to use the Work (including but not limited to damages for loss of goodwill, work stoppage, computer failure or malfunction, or any and all other commercial damages or losses), even if such Contributor has been advised of the possibility of such damages.

9. Accepting Warranty or Additional Liability. While redistributing the Work or Derivative Works thereof, You may choose to offer, and charge a fee for, acceptance of support, warranty, indemnity, or other liability obligations and/or rights consistent with this License. However, in accepting such obligations, You may act only on Your own behalf and on Your sole responsibility, not on behalf of any other Contributor, and only if You agree to indemnify, defend, and hold each Contributor harmless for any liability incurred by, or claims asserted against, such Contributor by reason of your accepting any such warranty or additional liability.

US Government Use

Harlequin MultiRIP software is a computer software program developed at private expense. If the Harlequin MultiRIP software is acquired under the terms of a proposal or agreement with the United States Government or any contractor therefor, the software is subject to the following restricted rights notice: “This Software is commercial computer software provided with RESTRICTED RIGHTS. Use, duplication, or disclosure by the U.S. Government is subject to restrictions as set forth in subparagraph (c)(1)(ii) of the Rights in Technical Data and Computer Software clause at DFARS 252.227-7013, FAR 52.227-17 Alternate III (g)(3), or subparagraphs (c)(1) and (2) of the Commercial Computer Software -- Restricted Rights at 48 CFR 52.227-19, as applicable, and their successor provisions. Contractor/Manufacturer is Global Graphics Software Incorporated, Waltham, MA 02451.”